



PRINCE Dr. K. VASUDEVAN COLLEGE OF ENGINEERING AND TECHNOLOGY

(Approved by AICTE, Affiliated to Anna University & ISO 9001:2015 Certified Institution)
Medavakkam-Mambakkam Main Road, Ponmar, Chennai-600127

STUDENT FEEDBACK ON SYLLABUS – ANALYSIS REPORT

Academic Year

2020-21

Department


Computer Science and Engineering

Number of Respondents

73

Rate the curriculum/ Syllabus on the following Points

S. No	Feedback on Syllabus	Strongly agree	Agree	Neutral	Disagree	Strongly Disagree
		5	4	3	2	1
1	Whether the syllabus is career oriented?	54	17	2	0	0
2	Whether the course was well structured to achieve course outcomes?	55	14	3	1	0
3	Rate the size of the syllabus in terms of student's load?	50	19	3	1	0
4	Whether the course objective is clear?	48	21	3	1	0
5	Are the books prescribed as a text book reference book in related to syllabus?	50	18	4	0	1
6	Whether the syllabus is relevant to real world problems?	47	23	2	1	0
7	Whether the syllabus is covered with industrial standards?	48	21	3	1	0
8	Is the syllabus in calculated necessary ethical values and concern for the society?	47	20	4	1	1


PRINCIPAL
PRINCE DR. K. VASUDEVAN COLLEGE OF
ENGINEERING AND TECHNOLOGY
PONMAR, CHENNAI-600 127.



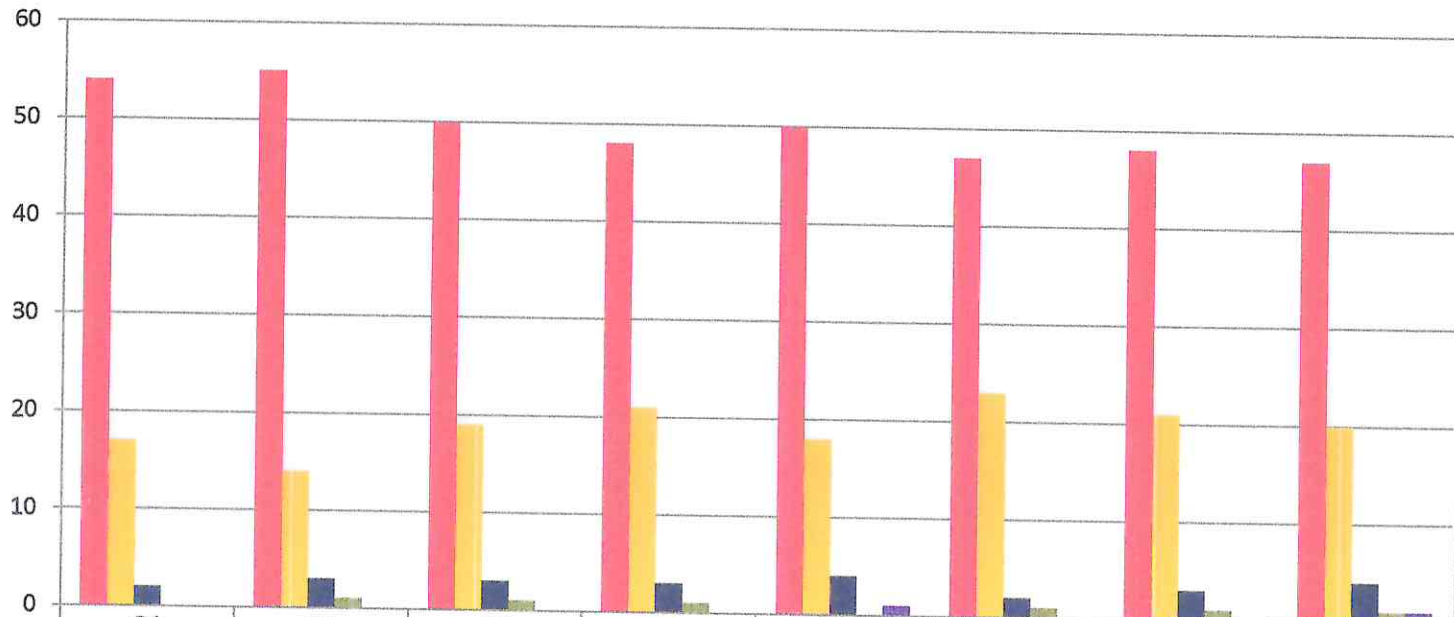
PRINCE Dr. K.VASUDEVAN COLLEGE OF ENGINEERING AND TECHNOLOGY

(Approved by AICTE, Affiliated to Anna University & ISO 9001:2015 Certified Institution)
Medavakkam-Mambakkam Main Road, Ponmar, Chennai-600127

STUDENT FEEDBACK ON SYLLABUS - 2020-2021

Computer Science and Engineering

(NUMBER OF RESPONDENTS - 73)



	Q1	Q2	Q3	Q4	Q5	Q6	Q7	Q8
Strongly agree	54	55	50	48	50	47	48	47
Agree	17	14	19	21	18	23	21	20
Neutral	2	3	3	3	4	2	3	4
Disagree	0	1	1	1	0	1	1	1
Strongly Disagree	0	0	0	0	1	0	0	1

[Signature]
PRINCIPAL
PRINCE DR. K. VASUDEVAN COLLEGE OF
ENGINEERING AND TECHNOLOGY
PONMAR, CHENNAI-600127

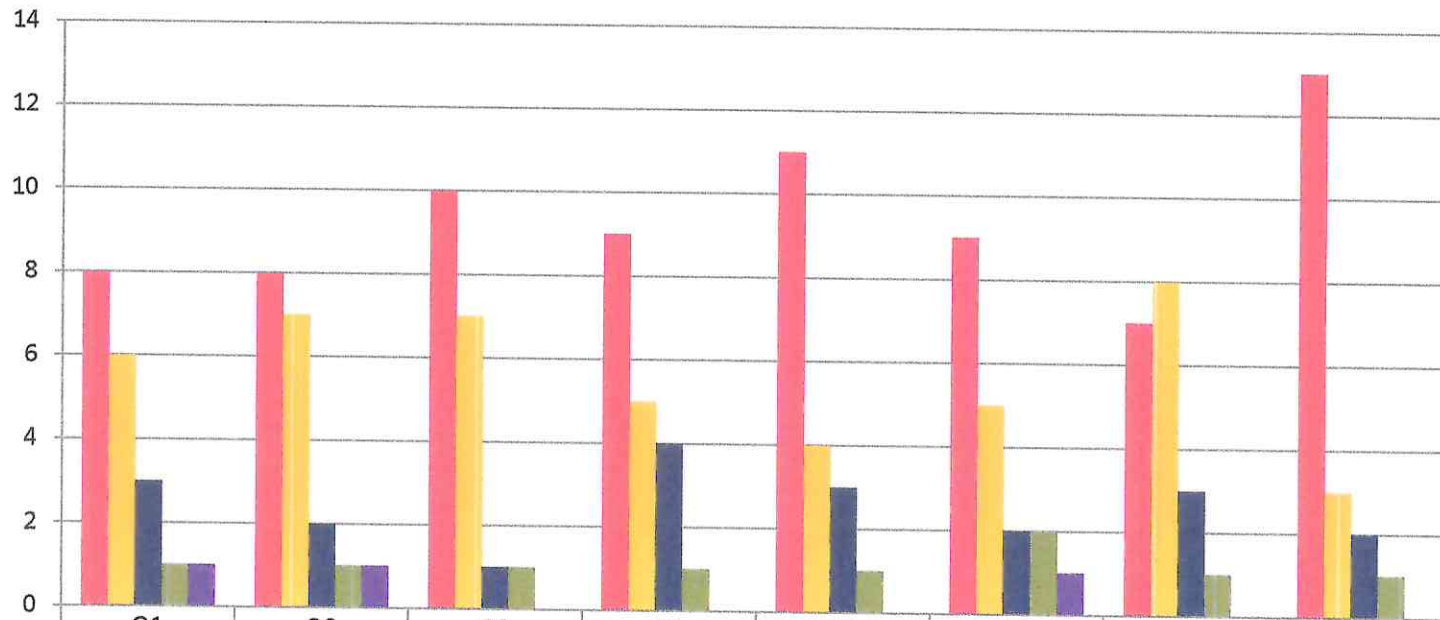


PRINCE Dr. K. VASUDEVAN COLLEGE OF ENGINEERING AND TECHNOLOGY

(Approved by AICTE, Affiliated to Anna University & ISO 9001:2015 Certified Institution)
Medavakkam-Mambakkam Main Road, Ponmar, Chennai-600127

STUDENT FEEDBACK ON SYLLABUS - 2020-2021

Mechanical Engineering (NUMBER OF RESPONDENTS - 19)



	Q1	Q2	Q3	Q4	Q5	Q6	Q7	Q8
Strongly agree	8	8	10	9	11	9	7	13
Agree	6	7	7	5	4	5	8	3
Neutral	3	2	1	4	3	2	3	2
Disagree	1	1	1	1	1	2	1	1
Strongly Disagree	1	1	0	0	0	1	0	0

[Signature]
PRINCIPAL

PRINCE DR. K. VASUDEVAN COLLEGE OF ENGINEERING AND TECHNOLOGY



PRINCE Dr. K. VASUDEVAN COLLEGE OF ENGINEERING AND TECHNOLOGY

(Approved by AICTE, Affiliated to Anna University & ISO 9001:2015 Certified Institution)

Medavakkam-Mambakkam Main Road, Ponmar, Chennai-600127

STUDENT FEEDBACK ON SYLLABUS – ANALYSIS REPORT

Academic Year

2020-21

Department


Artificial Intelligence and Data Science

Number of Respondents

25

Rate the curriculum/ Syllabus on the following Points

S. No	Feedback on Syllabus	Strongly agree	Agree	Neutral	Disagree	Strongly Disagree
		5	4	3	2	1
1	Whether the syllabus is career oriented?	17	6	2	0	0
2	Whether the course was well structured to achieve course outcomes?	14	8	2	0	1
3	Rate the size of the syllabus in terms of student's load?	17	7	0	1	0
4	Whether the course objective is clear?	16	8	0	1	0
5	Are the books prescribed as a text book reference book in related to syllabus?	16	7	1	0	1
6	Whether the syllabus is relevant to real world problems?	17	8	0	0	0
7	Whether the syllabus is covered with industrial standards?	17	7	0	1	0
8	Is the syllabus in calculated necessary ethical values and concern for the society?	18	7	0	0	0


PRINCIPAL
PRINCE DR. K. VASUDEVAN COLLEGE OF
ENGINEERING AND TECHNOLOGY
PONMAR, CHENNAI-600 127.



PRINCE Dr. K. VASUDEVAN COLLEGE OF ENGINEERING AND TECHNOLOGY

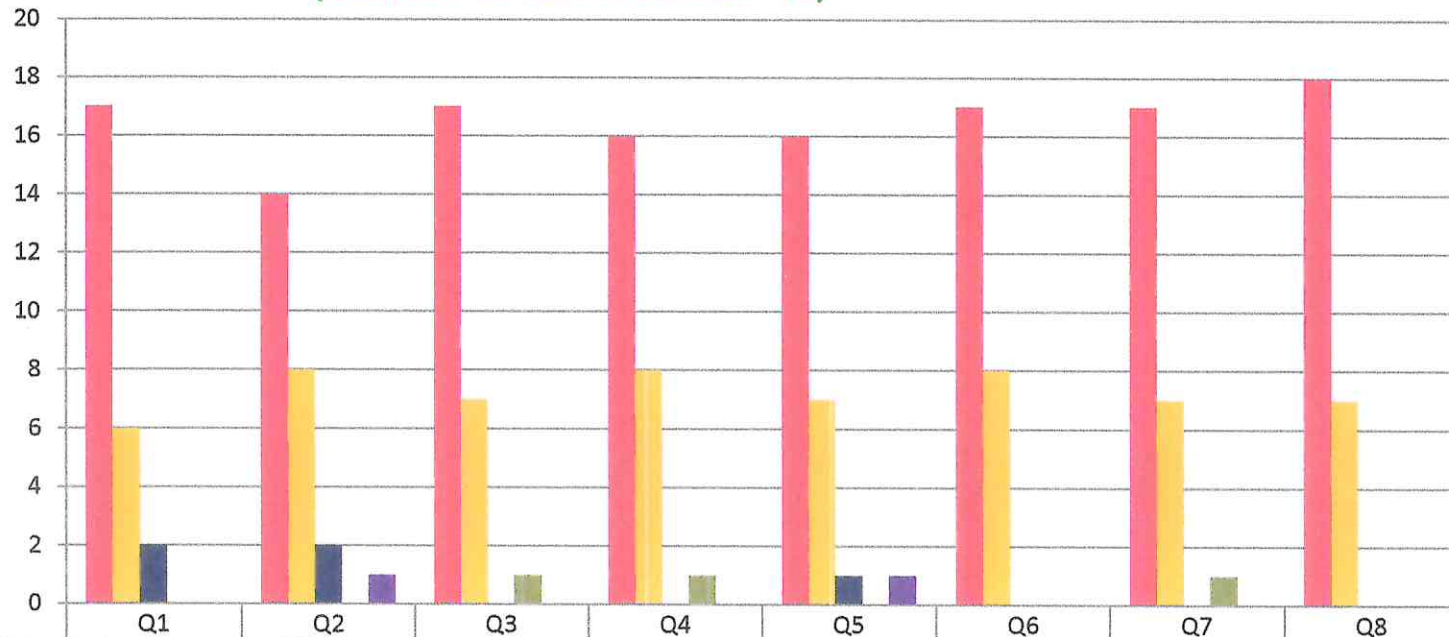
(Approved by AICTE, Affiliated to Anna University & ISO 9001:2015 Certified Institution)

Medavakkam-Mambakkam Main Road, Ponmar, Chennai-600127

STUDENT FEEDBACK ON SYLLABUS - 2020-2021

Artificial Intelligence and Data Science

(NUMBER OF RESPONDENTS - 25)



	Q1	Q2	Q3	Q4	Q5	Q6	Q7	Q8
Strongly agree	17	14	17	16	16	17	17	18
Agree	6	8	7	8	7	8	7	7
Neutral	2	2	0	0	1	0	0	0
Disagree	0	0	1	1	0	0	1	0
Strongly Disagree	0	1	0	0	1	0	0	0

[Signature]
PRINCIPAL
 PRINCE DR. K. VASUDEVAN COLLEGE OF
 ENGINEERING AND TECHNOLOGY
 PONMAR, CHENNAI-600 127.



PRINCE Dr. K. VASUDEVAN COLLEGE OF ENGINEERING AND TECHNOLOGY

(Approved by AICTE, Affiliated to Anna University & ISO 9001:2015 Certified Institution)


Medavakkam-Mambakkam Main Road, Ponmar, Chennai-600127

STUDENT FEEDBACK ON SYLLABUS – ANALYSIS REPORT

Academic Year 2020-21
Department Biomedical Engineering
Number of Respondents 17

Rate the curriculum/ Syllabus on the following Points

S. No	Feedback on Syllabus	Strongly agree	Agree	Neutral	Disagree	Strongly Disagree
		5	4	3	2	1
1	Whether the syllabus is career oriented?	10	5	0	1	1
2	Whether the course was well structured to achieve course outcomes?	11	4	0	1	1
3	Rate the size of the syllabus in terms of student's load?	13	2	1	1	0
4	Whether the course objective is clear?	13	2	1	1	0
5	Are the books prescribed as a text book reference book in related to syllabus?	11	5	0	1	0
6	Whether the syllabus is relevant to real world problems?	10	6	0	0	1
7	Whether the syllabus is covered with industrial standards?	11	4	1	1	0
8	Is the syllabus in calculated necessary ethical values and concern for the society?	13	3	0	1	0


PRINCIPAL
PRINCE DR. K. VASUDEVAN COLLEGE OF
ENGINEERING AND TECHNOLOGY
PONMAR, CHENNAI-600 127.



PRINCE Dr. K. VASUDEVAN COLLEGE OF ENGINEERING AND TECHNOLOGY

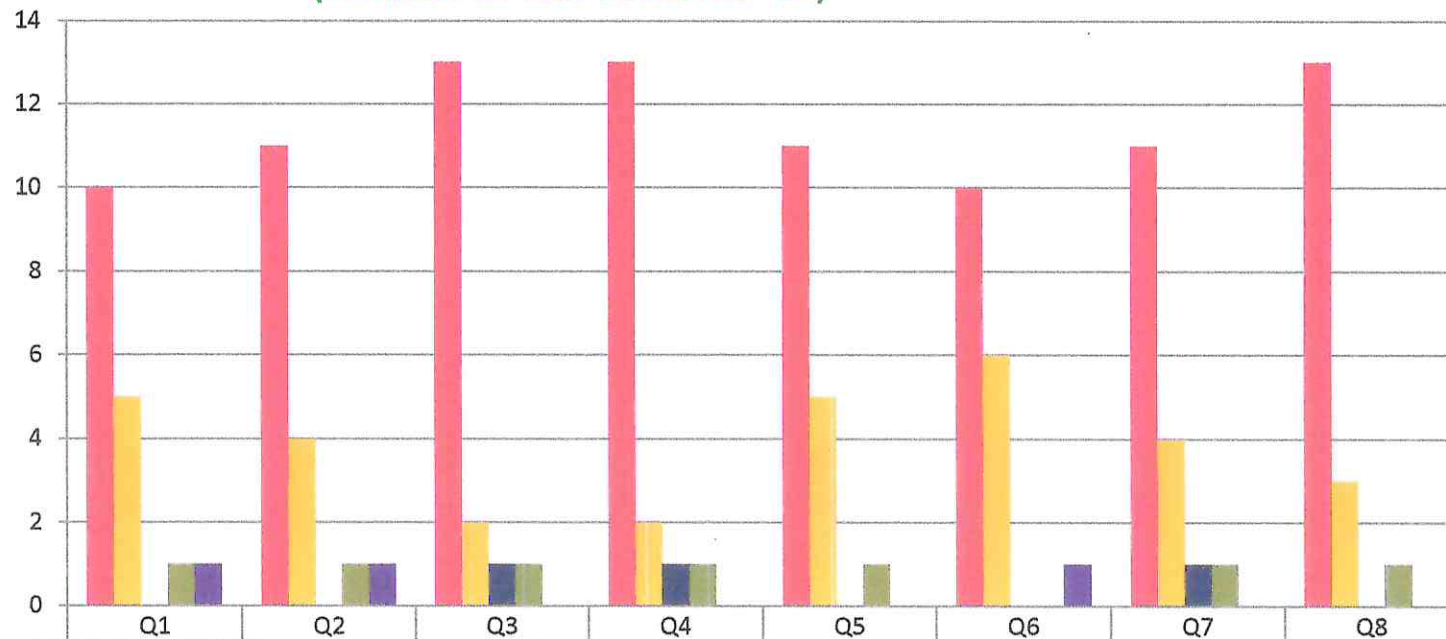
(Approved by AICTE, Affiliated to Anna University & ISO 9001:2015 Certified Institution)

Medavakkam-Mambakkam Main Road, Ponmar, Chennai-600127

STUDENT FEEDBACK ON SYLLABUS - 2020-2021

Biomedical Engineering

(NUMBER OF RESPONDENTS - 17)



	Q1	Q2	Q3	Q4	Q5	Q6	Q7	Q8
Strongly agree	10	11	13	13	11	10	11	13
Agree	5	4	2	2	5	6	4	3
Neutral	0	0	1	1	0	0	1	0
Disagree	1	1	1	1	1	0	1	1
Strongly Disagree	1	1	0	0	0	1	0	0

PRINCIPAL
PRINCE DR. K. VASUDEVAN COLLEGE OF
ENGINEERING AND TECHNOLOGY
 PONMAR, CHENNAI-600127



PRINCE Dr. K. VASUDEVAN COLLEGE OF ENGINEERING AND TECHNOLOGY

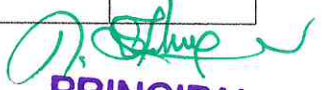
(Approved by AICTE, Affiliated to Anna University & ISO 9001:2015 Certified Institution)
Medavakkam-Mambakkam Main Road, Ponmar, Chennai-600127

STUDENT FEEDBACK ON SYLLABUS – ANALYSIS REPORT

Academic Year 2020-21
Department Electronics and Communication Engineering
Number of Respondents 23

Rate the curriculum/ Syllabus on the following Points

S. No	Feedback on Syllabus	Strongly agree	Agree	Neutral	Disagree	Strongly Disagree
		5	4	3	2	1
1	Whether the syllabus is career oriented?	13	8	0	1	1
2	Whether the course was well structured to achieve course outcomes?	14	7	0	1	1
3	Rate the size of the syllabus in terms of student's load?	16	5	1	1	0
4	Whether the course objective is clear?	16	5	1	1	0
5	Are the books prescribed as a text book reference book in related to syllabus?	14	8	0	1	0
6	Whether the syllabus is relevant to real world problems?	13	9	0	0	1
7	Whether the syllabus is covered with industrial standards?	14	7	1	1	0
8	Is the syllabus in calculated necessary ethical values and concern for the society?	16	6	0	1	0

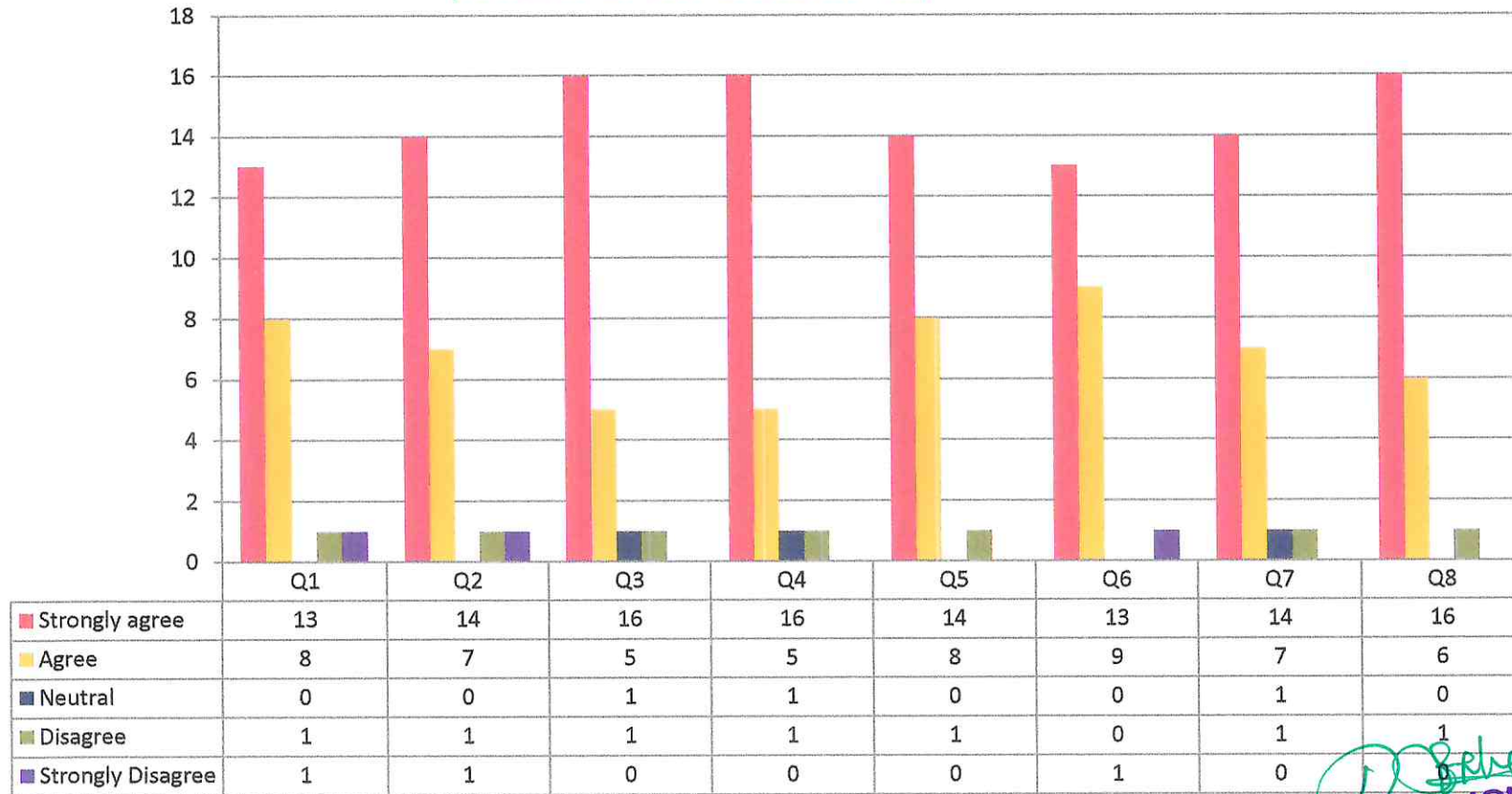

PRINCIPAL
PRINCE DR. K. VASUDEVAN COLLEGE OF
ENGINEERING AND TECHNOLOGY
PONMAR, CHENNAI-600 127.



PRINCE Dr. K. VASUDEVAN COLLEGE OF ENGINEERING AND TECHNOLOGY

(Approved by AICTE, Affiliated to Anna University & ISO 9001:2015 Certified Institution)
Medavakkam-Mambakkam Main Road, Ponmar, Chennai-600127

STUDENT FEEDBACK ON SYLLABUS - 2020-2021 Electronics and Communication Engineering (NUMBER OF RESPONDENTS - 23)



[Signature]
PRINCIPAL
PRINCE DR. K. VASUDEVAN COLLEGE OF
ENGINEERING AND TECHNOLOGY
PONMAR, CHENNAI-600 127-



PRINCE Dr. K. VASUDEVAN COLLEGE OF ENGINEERING AND TECHNOLOGY

(Approved by AICTE, Affiliated to Anna University & ISO 9001:2015 Certified Institution)

Medavakkam-Mambakkam Main Road, Ponmar, Chennai-600127

STUDENT FEEDBACK ON SYLLABUS – ANALYSIS REPORT

Academic Year

2020-21

Department

Computer Science and Engineering -PG

Number of Respondents

3

Rate the curriculum/ Syllabus on the following Points

S. No	Feedback on Syllabus	Strongly agree	Agree	Neutral	Disagree	Strongly Disagree
		5	4	3	2	1
1	Whether the syllabus is career oriented?	2	1	0	0	0
2	Whether the course was well structured to achieve course outcomes?	2	1	0	0	0
3	Rate the size of the syllabus in terms of student's load?	2	1	0	0	0
4	Whether the course objective is clear?	2	1	0	0	0
5	Are the books prescribed as a text book reference book in related to syllabus?	2	0	1	0	0
6	Whether the syllabus is relevant to real world problems?	2	1	0	0	0
7	Whether the syllabus is covered with industrial standards?	2	1	0	0	0
8	Is the syllabus in calculated necessary ethical values and concern for the society?	1	1	1	0	0

PRINCIPAL

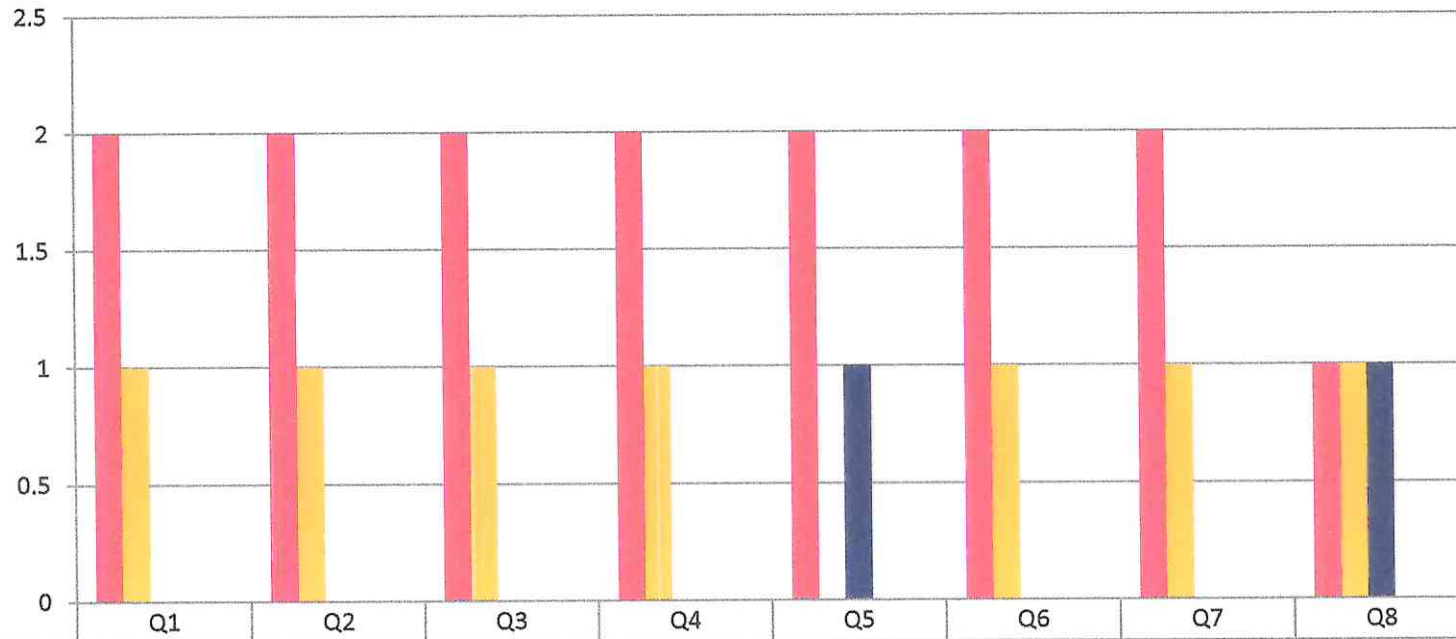
PRINCE DR. K. VASUDEVAN COLLEGE OF
ENGINEERING AND TECHNOLOGY
PONMAR, CHENNAI-600 127.




PRINCE Dr. K. VASUDEVAN COLLEGE OF ENGINEERING AND TECHNOLOGY

(Approved by AICTE, Affiliated to Anna University & ISO 9001:2015 Certified Institution)
Medavakkam-Mambakkam Main Road, Ponmar, Chennai-600127

STUDENT FEEDBACK ON SYLLABUS - 2020-2021 Computer Science and Engineering -PG (NUMBER OF RESPONDENTS - 3)



	Q1	Q2	Q3	Q4	Q5	Q6	Q7	Q8
Strongly agree	2	2	2	2	2	2	2	1
Agree	1	1	1	1	0	1	1	1
Neutral	0	0	0	0	1	0	0	1
Disagree	0	0	0	0	0	0	0	0
Strongly Disagree	0	0	0	0	0	0	0	0


PRINCIPAL
PRINCE DR. K. VASUDEVAN COLLEGE OF
ENGINEERING AND TECHNOLOGY
PONMAR, CHENNAI-600127.



PRINCE Dr. K. VASUDEVAN COLLEGE OF ENGINEERING AND TECHNOLOGY

(Approved by AICTE, Affiliated to Anna University & ISO 9001:2015 Certified Institution)

Medavakkam-Mambakkam Main Road, Ponmar, Chennai-600127

STUDENT FEEDBACK ON SYLLABUS – ANALYSIS REPORT

Academic Year

2020-21

Department


Electrical and Electronics Engineering

Number of Respondents

3

Rate the curriculum/ Syllabus on the following Points

S. No	Feedback on Syllabus	Strongly agree	Agree	Neutral	Disagree	Strongly Disagree
		5	4	3	2	1
1	Whether the syllabus is career oriented?	2	1	0	0	0
2	Whether the course was well structured to achieve course outcomes?	1	2	0	0	0
3	Rate the size of the syllabus in terms of student's load?	1	2	0	0	0
4	Whether the course objective is clear?	2	1	0	0	0
5	Are the books prescribed as a text book reference book in related to syllabus?	2	0	1	0	0
6	Whether the syllabus is relevant to real world problems?	1	1	1	0	0
7	Whether the syllabus is covered with industrial standards?	2	1	0	0	0
8	Is the syllabus in calculated necessary ethical values and concern for the society?	1	1	1	0	0


PRINCIPAL
PRINCE DR. K. VASUDEVAN COLLEGE OF
ENGINEERING AND TECHNOLOGY
PONMAR, CHENNAI-600 127.



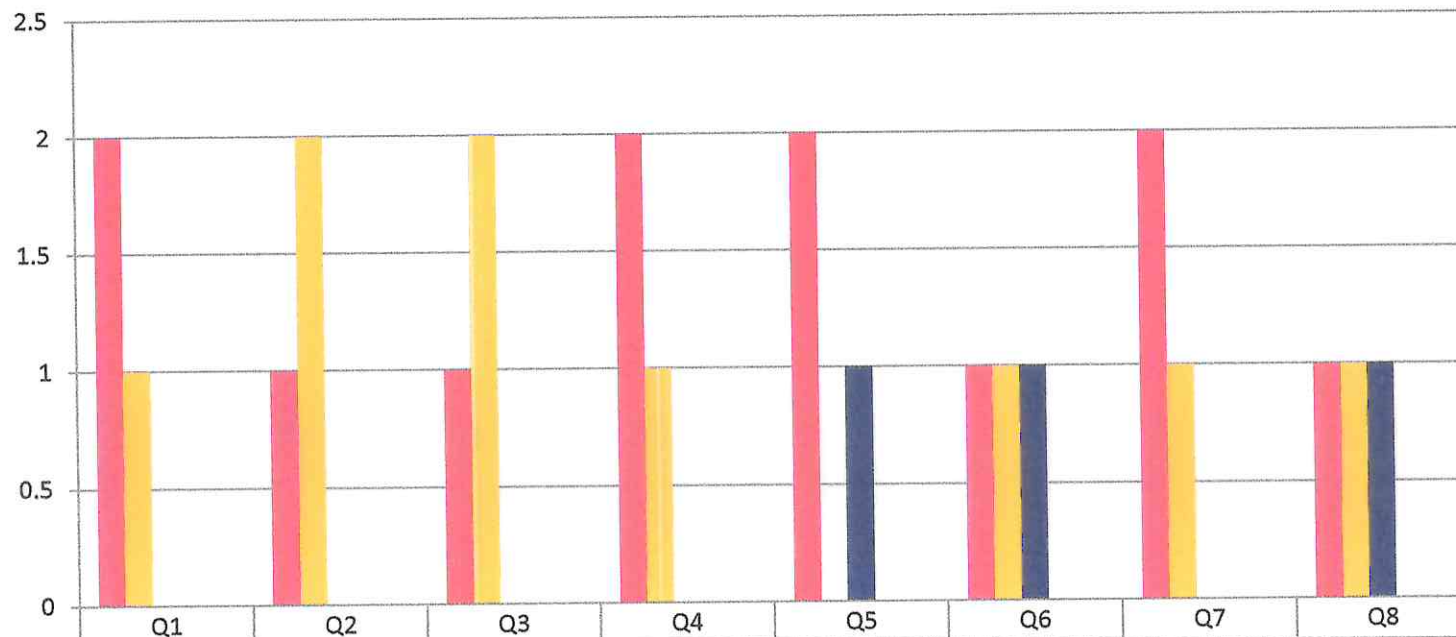
PRINCE Dr. K. VASUDEVAN COLLEGE OF ENGINEERING AND TECHNOLOGY

(Approved by AICTE, Affiliated to Anna University & ISO 9001:2015 Certified Institution)
Medavakkam-Mambakkam Main Road, Ponmar, Chennai-600127


STUDENT FEEDBACK ON SYLLABUS - 2020-2021

Electrical and Electronics Engineering

(NUMBER OF RESPONDENTS - 3)



	Q1	Q2	Q3	Q4	Q5	Q6	Q7	Q8
Strongly agree	2	1	1	2	2	1	2	1
Agree	1	2	2	1	0	1	1	1
Neutral	0	0	0	0	1	1	0	1
Disagree	0	0	0	0	0	0	0	0
Strongly Disagree	0	0	0	0	0	0	0	0


PRINCIPAL
PRINCE DR. K. VASUDEVAN COLLEGE OF ENGINEERING AND TECHNOLOGY
PONMAR, CHENNAI-600 127.